



General :

Type : Landing craft
Port of registry : UAE
Flag : UAE
Trading area : International voyages & territorial waters
Call sign : ---
Official no. : ---
IMO no. : ---
Yard no. : ---
Shipbuilder : Fuzhou Xingshun Shipyard
Place of built : China
Year of built : 2009
Classification : IRS
Class notation : LANDING CRAFT + RORO
Gross tonnage : 1083
Net tonnage : 325

Dimensions :

Length overall : 63 m (206.69')
LBP : 58 m (190.29')
Breadth (mld) : 14.6 m (47.9')
Depth (mld) : 4 m (13.12')
Lightship weight : 866.56 t
Deadweight : 1412.7 t
Displacement : 2279.26 t
Summer draft : 3.161 m (10.37')

Accommodation

No. of crew : 11 persons
No. of passengers : 3 persons

Tank capacity (100%) :

Fresh water tanks (14) : 1356.4 t
Ballast tanks (2) : 95.3 t
Fuel oil tanks (10) : 586.88 t
Lube oil tank (1) : 4.9 t
Dirty oil tank (1) : 4.59 t

Propulsion system :

Main engines (2) : CAT
Model : CAT - 3412
Total power : 2 x 848 kW @ 1800 rpm
Bow thruster : Motor driven
Gearboxes : Reintjes (WAF - 464L)
Propellers : 2 x Fixed pitch open type propellers

Auxiliary equipment :

Main generator sets (2) : Cummins
Model : QSM11 - DM
Total power : 2 x 355 kW @ 1500 rpm
Emergency generator (1) : Cummins
Model : 4BT3.9D(M)
Total power : 46 kW @ 1500 rpm

Clear deck space : 665 m²

Deck strength : 7 t/m²

Stowage of dangerous goods : Compatible if required

Size of ramp door : 7.365 m x 9.15 m

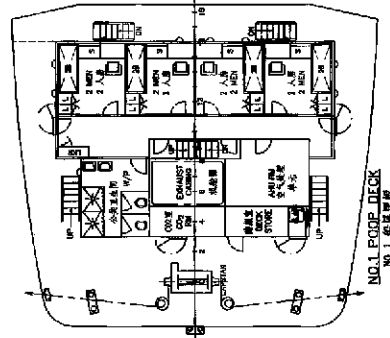
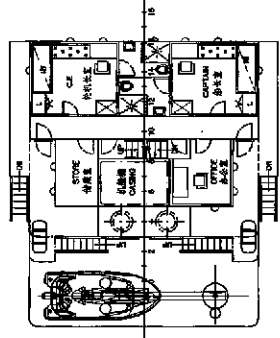
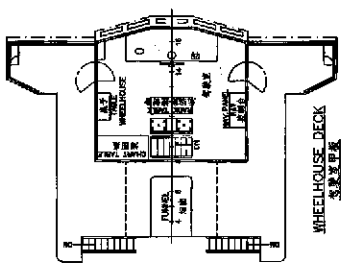
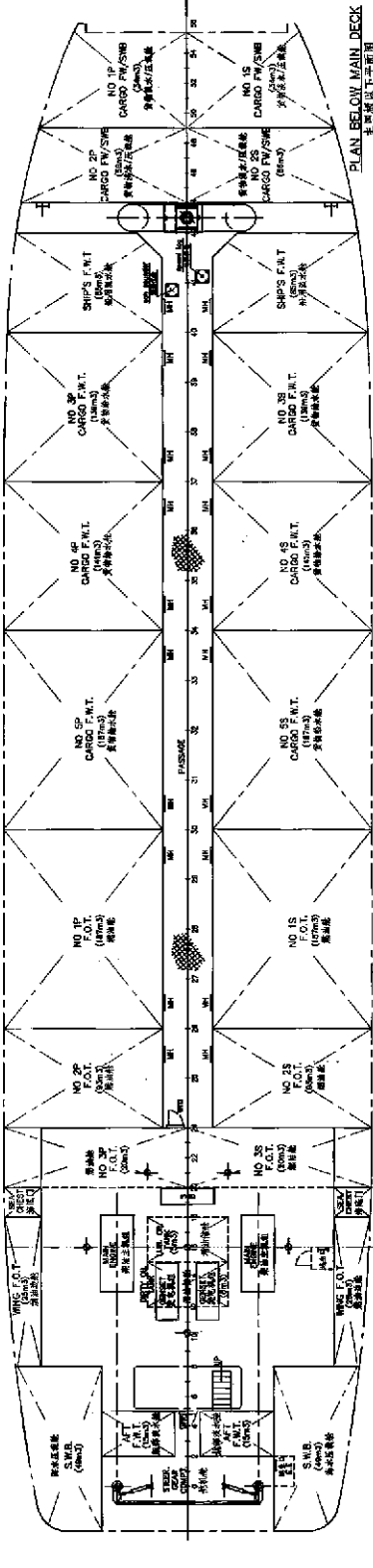
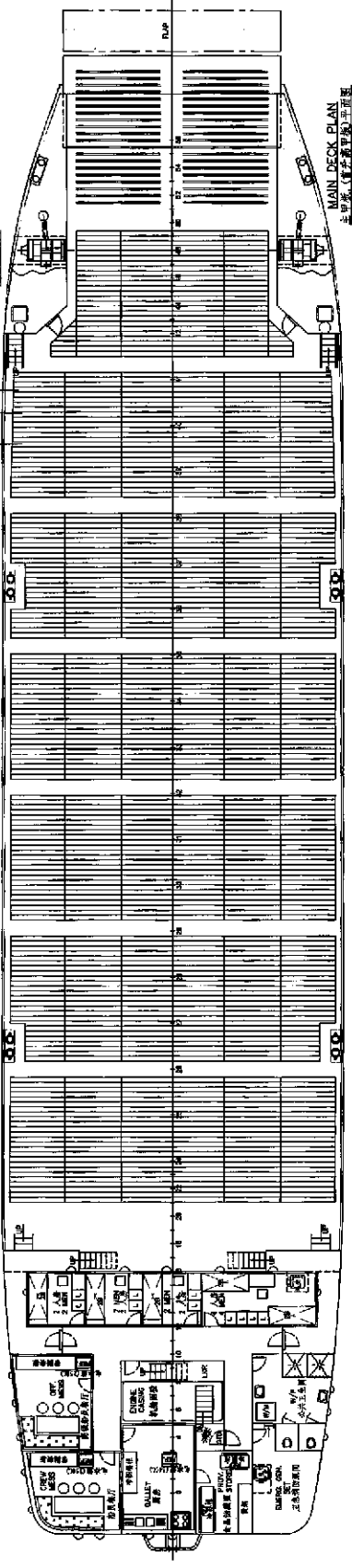
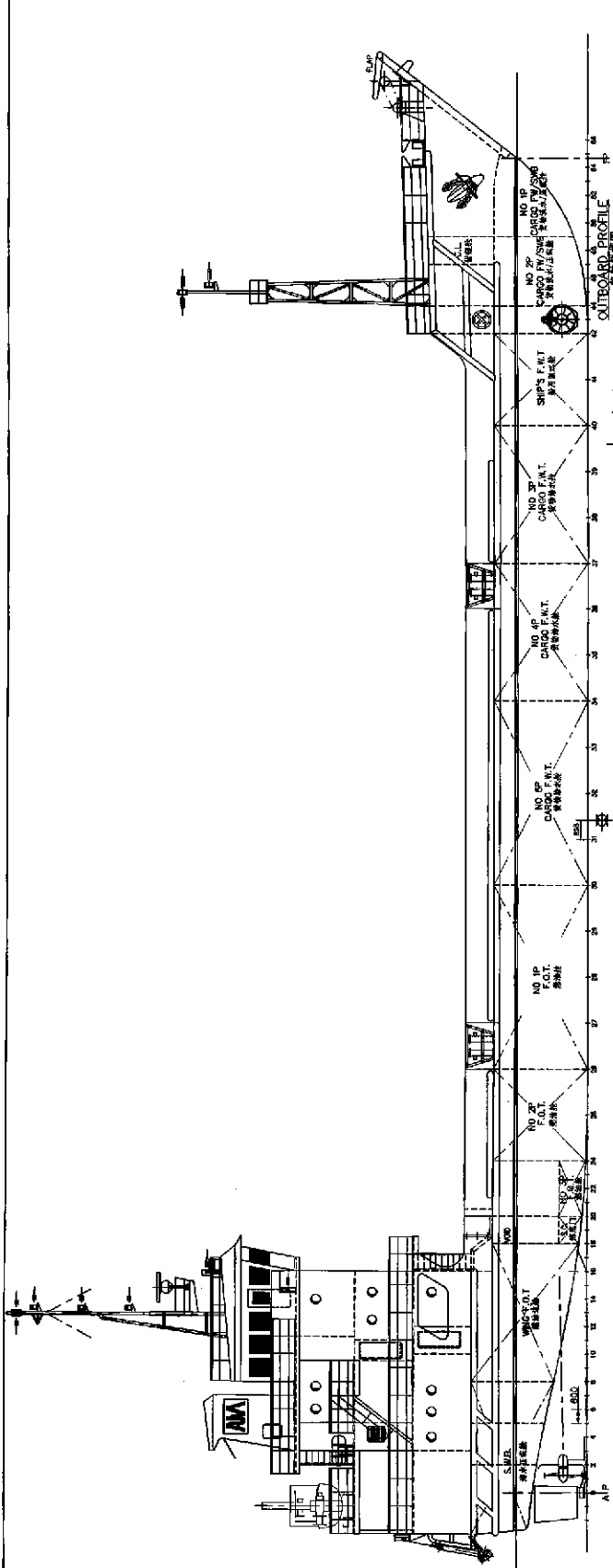
Size of ramp door flap : 1.625 m x 9.15 m

Ramp door designed loading : 2.75 t/m²

Ramp door SWL : 175 t

Fuel consumption

1 - Free running	3 - 4 t
2 - Fully laden	4.5 t
Speed :	
1 - Free running	6 - 7 knots
2 - Fully laden	6 knots



PRINCIPAL PARTICULARS
主要特征

LENGTH OVERALL	63.00m
LENGTH B.P.	55.00m
BEAM M.D.	14.80m
DEPTH M.D.	4.20m
DRAFT DESIGNED	3.161m
COMPLEMENT	20 men
CARGO F.W.	1100m ³ (approx.)
SHIP'S F.W.	200 m ³ (approx.)
CARGO F.O.	370m ³ (approx.)
SHIP'S FUEL	270m ³ (approx.)

Finished plan
日商(船体)有限公司 (Fuzhou Shipbuilding Co., Ltd.)
福州兴顺造船有限公司 (Fuzhou Xingshun Shipbuilding Co., Ltd.)

63m LANDING CRANES (AL JABER 70)
总布置图 (总工程师)

GENERAL ARRANGEMENT (finished plan)
总布置图 (总工程师)

FUZHOU XING SHUN SHIPBUILDING CO., LTD.
福州兴顺造船有限公司 兴顺造船厂

SCALE: 1:100 C-4472/G-1