

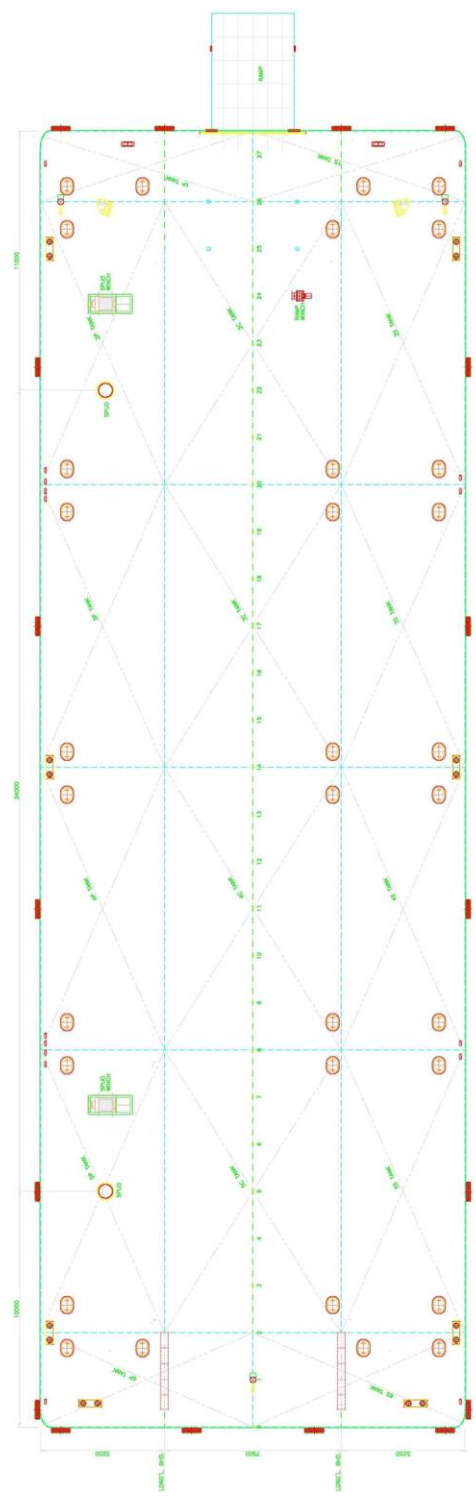
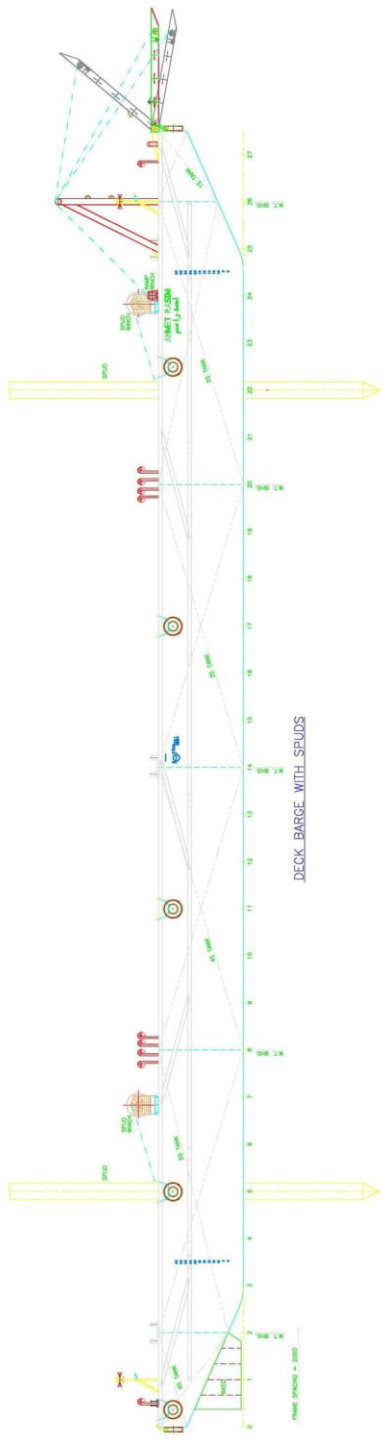
## CRANE BARGE

### AHMET RASİM

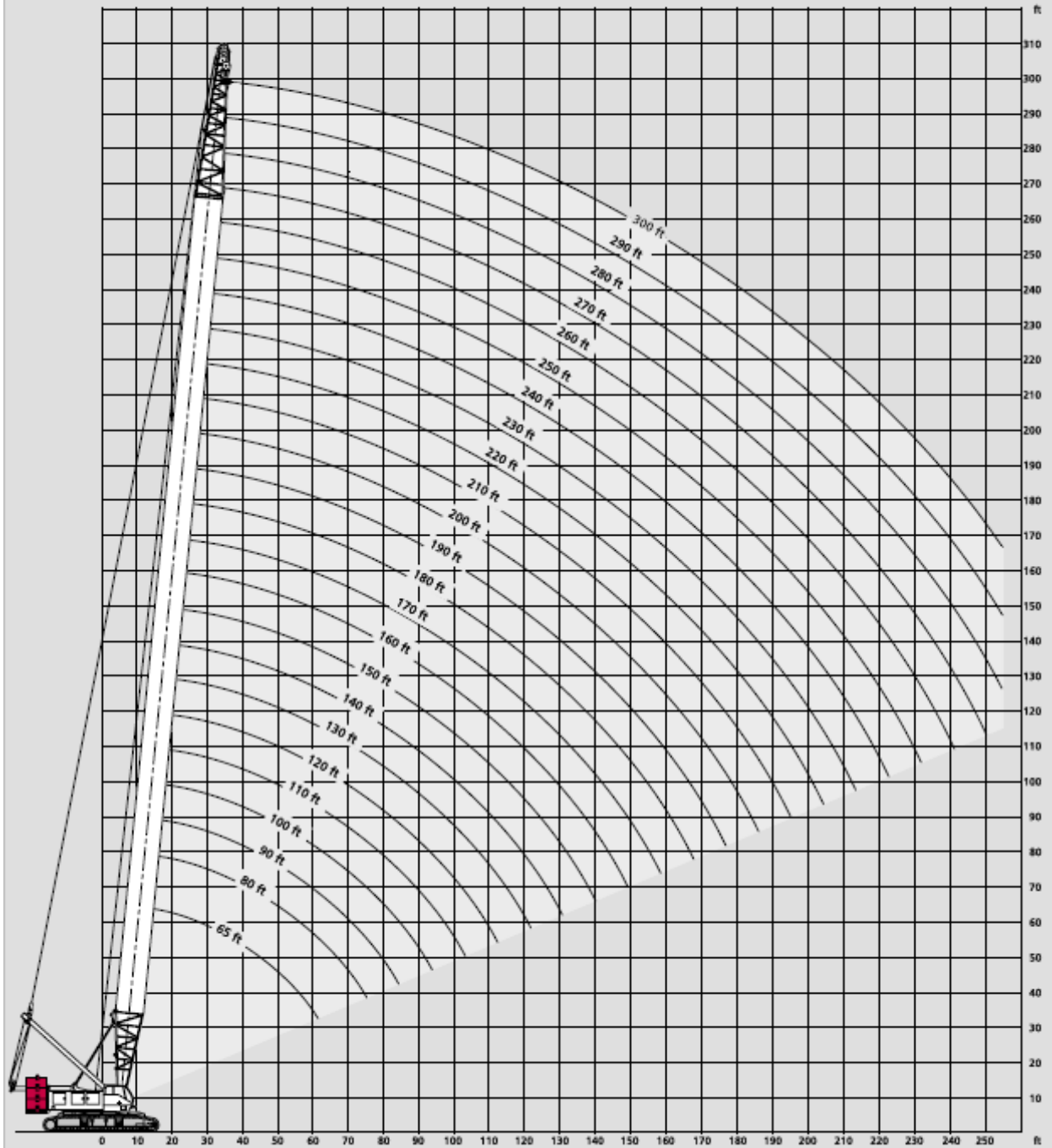


<b>NAME</b>	AHMET RASİM
<b>TYPE</b>	CRANE BARGE
<b>FLAG</b>	PANAMA
<b>CLASS</b>	BUREAU VERITAS
<b>CLASS NO</b>	14872 S
<b>GRT</b>	897
<b>NRT</b>	269
<b>LENGTH</b>	55.00 m.
<b>BREADTH</b>	18.00 m.
<b>DEPTH</b>	3.60 m.
<b>DATE OF BUILT</b>	2008
<b>BUILDER</b>	DUBAI DRYDOCKS
<b>LIFTING CAPACITY</b>	

- MAIN PARTICULARS**
- LENGTH OVER ALL — 35.00 M
  - LENGTH OVER WATER LINE — 35.00 M
  - BREADTH — 18.00 M
  - DEPTH — 2.28 M
  - SCANTLING DRIFT — 13.7 M<sup>2</sup>
  - DISTRIBUTED DECK CARGO — — BV
  - CLASS — BV
- NOTATION - 1 \* HULL, PONTON  
UNRESTRICTED NAVIGATION







# With 92HI Offset Tip Boom and 195,000 Pound Counterweight

195 klb + 64 klb CB 

360°

ANSI B30.5  
DIN/ISO

65' (21.3 m) Boom length			
Radius (Feet)	Boom Angle (Degrees)	360 Degree Rating (Pounds)	From Boom Pt. to Ground (Feet)
16	81.4	550,000 *	77
20	77.8	438,430 *	76
25	73.2	350,740 *	75
30	68.5	292,250 *	74
35	63.6	232,570	72
40	58.5	191,980	69
50	47.2	141,340	62
60	33.1	111,040	52

80' (24.4 m) Boom length			
Radius (Feet)	Boom Angle (Degrees)	360 Degree Rating (Pounds)	From Boom Pt. to Ground (Feet)
18	81.6	486,730 *	87
20	80.1	438,040 *	86
25	76.4	350,420 *	85
30	72.7	291,950 *	84
35	68.9	232,830	82
40	64.9	192,200	80
50	56.6	141,520	74
60	47.4	111,220	67
70	36.5	90,940	55
80	21.0	76,540	36

90' (27.4 m) Boom length			
Radius (Feet)	Boom Angle (Degrees)	360 Degree Rating (Pounds)	From Boom Pt. to Ground (Feet)
19	81.8	460,720 *	97
20	81.2	437,780 *	97
25	78.0	350,200 *	96
30	74.7	291,750 *	94
35	71.3	232,570	93
40	67.9	191,940	91
50	60.8	141,230	86
60	53.1	110,930	80
70	44.5	90,640	71
80	34.2	76,270	58
90	19.7	65,390	38

100' (30.5 m) Boom length			
Radius (Feet)	Boom Angle (Degrees)	360 Degree Rating (Pounds)	From Boom Pt. to Ground (Feet)
21	81.5	416,560 *	107
25	79.2	349,990 *	106
30	76.2	291,560 *	105
35	73.3	232,180	103
40	70.2	191,530	102
50	64.0	140,800	98
60	57.3	110,500	92
70	50.1	90,190	84
80	42.1	75,850	75
90	32.4	64,980	61
100	18.6	56,510	40

110' (33.5 m) Boom length			
Radius (Feet)	Boom Angle (Degrees)	360 Degree Rating (Pounds)	From Boom Pt. to Ground (Feet)
22	81.8	397,510 *	117
25	80.2	349,770 *	116
30	77.5	291,370 *	115
35	74.8	231,840	114
40	72.1	191,170	112
50	66.5	140,420	109
60	60.6	110,120	104
70	54.4	89,800	97
80	47.6	75,490	89
90	40.0	64,610	78
100	30.8	56,140	64
110	17.7	49,370	41

120' (36.6 m) Boom length			
Radius (Feet)	Boom Angle (Degrees)	360 Degree Rating (Pounds)	From Boom Pt. to Ground (Feet)
23	82.0	373,770 *	126
25	81.0	349,560 *	126
30	78.6	291,180 *	125
35	76.1	231,450	124
40	73.6	190,780	123
50	68.6	140,010	119
60	63.3	109,710	115
70	57.8	89,380	109
80	51.9	75,080	102
90	45.5	64,200	93
100	38.2	55,730	82
110	29.4	48,960	67
120	16.9	43,430	43

130' (39.6 m) Boom length			
Radius (Feet)	Boom Angle (Degrees)	360 Degree Rating (Pounds)	From Boom Pt. to Ground (Feet)
25	81.7	321,040 *	136
30	79.5	287,400 *	135
35	77.2	231,430	134
40	74.9	190,760	133
50	70.3	140,010	130
60	65.5	109,740	126
70	60.5	89,410	121
80	55.3	75,140	115
90	49.7	64,250	107
100	43.6	55,790	97
110	36.6	49,020	85
120	28.2	43,490	69
130	16.2	38,980	44

140' (42.7 m) Boom length			
Radius (Feet)	Boom Angle (Degrees)	360 Degree Rating (Pounds)	From Boom Pt. to Ground (Feet)
26	81.9	297,000 *	146
30	80.2	281,420 *	146
35	78.1	231,040	145
40	76.0	190,370	144
50	71.8	139,590	141
60	67.4	109,320	137
70	62.8	88,970	132
80	58.1	74,720	127
90	53.1	63,820	120
100	47.8	55,360	111
110	41.9	48,590	101
120	35.2	43,060	88
130	27.2	38,600	72
140	15.6	34,660	45

150' (45.7 m) Boom length			
Radius (Feet)	Boom Angle (Degrees)	360 Degree Rating (Pounds)	From Boom Pt. to Ground (Feet)
28	81.7	292,420 *	156
30	80.9	275,620 *	156
35	78.9	230,610	155
40	77.0	189,910	154
50	73.0	139,110	151
60	69.0	108,840	148
70	64.8	88,460	143
80	60.5	74,230	138
90	55.9	63,320	132
100	51.2	54,850	124
110	46.0	48,080	116
120	40.4	42,540	105
130	34.0	38,120	91
140	26.2	34,200	74
150	15.1	30,820	47

## With 92HI Offset Tip Boom and 195,000 Pound Counterweight

195 klb + 64 klb CB 

360°

ANSI B 30.5  
DIN/ISO

### 160' (48.8 m) Boom length

Radius (Feet)	Boom Angle (Degrees)	360 Degree Rating (Pounds)	From Boom Pt. to Ground (Feet)
29	81.8	270,330*	166
30	81.5	268,190*	166
35	79.6	227,390*	165
40	77.8	189,490	164
50	74.1	138,670	162
60	70.3	108,380	158
70	66.5	88,000	154
80	62.5	73,780	150
90	58.3	62,870	144
100	54.0	54,390	137
110	49.4	47,610	129
120	44.5	42,070	120
130	39.0	37,680	108
140	32.8	33,760	94
150	25.3	30,390	76
160	14.6	27,470	48

### 170' (51.8 m) Boom length

30	82.0	249,690*	176
35	80.3	223,060*	175
40	78.5	189,050	174
50	75.1	138,210	172
60	71.5	107,930	169
70	67.9	87,530	165
80	64.2	73,320	161
90	60.4	62,400	155
100	56.4	53,910	149
110	52.3	47,140	142
120	47.8	41,590	134
130	43.0	37,240	124
140	37.8	33,310	112
150	31.8	29,940	97
160	24.6	27,030	78
170	14.1	24,460	49

### 180' (54.9 m) Boom length

32	81.8	215,060*	186
35	80.8	212,500*	185
40	79.2	188,840	184
50	75.9	138,010	182
60	72.6	107,760	179
70	69.2	87,350	176
80	65.8	73,170	172
90	62.2	62,250	167
100	58.5	53,770	161
110	54.7	46,990	155
120	50.7	41,440	147
130	46.4	37,130	138
140	41.8	33,200	128
150	36.7	29,840	115
160	30.9	26,910	100
170	23.8	24,370	80
180	13.7	21,830*	50


### 190' (57.9 m) Boom length

Radius (Feet)	Boom Angle (Degrees)	360 Degree Rating (Pounds)	From Boom Pt. to Ground (Feet)
33	81.9	199,300*	196
35	81.3	197,990*	195
40	79.8	186,320*	195
50	76.7	137,580	193
60	73.6	107,310	190
70	70.4	86,890	187
80	67.1	72,720	183
90	63.8	61,800	178
100	60.4	53,300	173
110	56.8	46,510	167
120	53.1	40,960	160
130	49.2	36,670	152
140	45.1	32,760	142
150	40.6	29,390	131
160	35.7	26,470	118
170	30.0	23,920	103
180	23.2	21,670	82
190	13.3	18,900*	51

### 200' (61.0 m) Boom length

35	81.7	193,970*	206
40	80.3	183,030*	205
50	77.4	137,100	203
60	74.4	106,830	200
70	71.4	86,380	197
80	68.3	72,230	194
90	65.2	61,290	189
100	62.0	52,790	184
110	58.7	46,000	179
120	55.3	40,440	172
130	51.7	36,180	165
140	47.9	32,250	156
150	43.9	28,890	146
160	39.5	25,960	135
170	34.7	23,410	122
180	29.2	21,160	105
190	22.6	19,160	84
200	13.0	16,120*	53

### 210' (64.0 m) Boom length

36	81.8	174,640*	216
40	80.7	174,640*	215
50	78.0	136,630	213
60	75.2	106,370	211
70	72.3	85,910	208
80	69.4	71,760	204
90	66.5	60,810	200
100	63.4	52,310	195
110	60.3	45,510	190
120	57.1	40,360	184
130	53.8	35,710	177
140	50.3	31,780	169
150	46.7	28,410	160
160	42.7	25,900	150
170	38.5	22,940	138
180	33.8	20,690	125
190	28.5	18,690	108
200	22.0	16,910	86
210	12.6	13,590*	54


195 klb + 64 klb CB 

360°

ANSI B 30.5  
DIN/ISO

220' (67.1 m) Boom length

37	82.0	156,330 *	225
40	81.2	156,330 *	225
50	78.5	136,180	223
60	75.8	105,890	221
70	73.1	85,410	218
80	70.4	71,290	215
90	67.6	60,330	211
100	64.7	51,820	207
110	61.8	45,020	202
120	58.8	39,890	196
130	55.7	35,240	189
140	52.5	31,310	182
150	49.1	27,940	174
160	45.5	25,010	165
170	41.7	22,470	154
180	37.6	20,210	142
190	33.0	18,210	128
200	27.8	16,420	110
210	21.5	14,810	88
220	12.3	11,230 *	55

230' (70.1 m) Boom length

39	81.8	132,640 *	235
40	81.6	132,510 *	235
50	79.0	132,510 *	233
60	76.5	105,630	231
70	73.9	85,150	229
80	71.3	71,050	225
90	68.6	60,080	222
100	65.9	51,570	218
110	63.1	44,770	213
120	60.3	39,670	207
130	57.4	35,020	201
140	54.4	31,090	195
150	51.2	27,720	187
160	47.9	24,800	178
170	44.5	22,250	169
180	40.7	20,000	158
190	36.7	18,000	145
200	32.3	16,200	131
210	27.2	14,600	113
220	21.0	13,150	90
230	12.1	9,440 *	56

240' (73.2 m) Boom length

40	81.9	119,340 *	245
50	79.5	119,340 *	244
60	77.1	105,180	242
70	74.6	84,680	239
80	72.1	70,590	236
90	69.6	59,620	233
100	67.0	51,100	229
110	64.3	44,290	224
120	61.7	39,210	219
130	58.9	34,560	213
140	56.1	30,620	207
150	53.1	27,260	200
160	50.0	24,340	192
170	46.8	21,780	183
180	43.5	19,520	173
190	39.8	17,520	161
200	35.9	15,730	148
210	31.6	14,130	133
220	26.6	12,680	115
230	20.6	10,860 *	92
240	11.8	7,380 *	57

250' (76.2 m) Boom length

Radius (Feet)	Boom Angle (Degrees)	360 Degree Rating (Pounds)	From Boom Pt. to Ground (Feet)
42	81.8	117,270 *	255
50	79.9	117,270 *	254
60	77.6	104,710	252
70	75.2	84,180	249
80	72.8	70,100	247
90	70.4	59,120	243
100	67.9	50,590	239
110	65.4	43,770	235
120	62.9	38,720	230
130	60.3	34,060	225
140	57.6	30,130	219
150	54.8	26,750	212
160	52.0	23,830	205
170	49.0	21,270	196
180	45.8	19,010	187
190	42.5	17,020	177
200	39.0	15,220	165
210	35.2	13,610	152
220	30.9	12,160	136
230	26.1	10,830	117
240	20.1	8,560 *	94
250	11.5	5,360 *	58

260' (79.2 m) Boom length

43	81.9	107,130 *	265
50	80.3	107,130 *	264
60	78.1	104,250	262
70	75.8	83,700	260
80	73.5	69,630	257
90	71.2	58,640	254
100	68.8	50,110	250
110	66.4	43,280	246
120	64.0	38,240	241
130	61.5	33,590	236
140	59.0	29,650	230
150	56.4	26,270	224
160	53.7	23,350	217
170	50.9	20,790	209
180	48.0	18,530	201
190	44.9	16,530	191
200	41.7	14,740	180
210	38.2	13,120	168
220	34.5	11,670	155
230	30.3	10,340	139

## With 92HI Offset Tip Boom and 195,000 Pound Counterweight

195 klb + 64 klb CB 

360°

ANSI B 30.5  
DIN/ISO

### 270' (82.3 m) Boom length

Radius (Feet)	Boom Angle (Degrees)	360 Degree Rating (Pounds)	From Boom Pt. to Ground (Feet)
44	82.0	98,020*	275
50	80.7	98,020*	274
60	78.5	97,710*	272
70	76.3	83,220	270
80	74.1	69,150	267
90	71.9	58,160	264
100	69.7	49,620	261
110	67.4	42,790	257
120	65.1	37,770	252
130	62.7	33,110	248
140	60.3	29,170	242
150	57.8	25,790	236
160	55.2	22,860	229
170	52.6	20,300	222
180	49.8	18,050	214
190	47.0	16,040	205
200	44.0	14,240	195
210	40.8	12,630	184
220	37.5	11,180	172
230	33.8	9,850	158

### 290' (88.4 m) Boom length

Radius (Feet)	Boom Angle (Degrees)	360 Degree Rating (Pounds)	From Boom Pt. to Ground (Feet)
47	81.9	76,270*	295
50	81.3	75,930*	294
60	79.3	75,260*	293
70	77.3	73,930*	291
80	75.3	68,390	288
90	73.2	57,390	285
100	71.1	48,840	282
110	69.0	42,000	278
120	66.9	37,040	274
130	64.7	32,370	270
140	62.5	28,420	265
150	60.2	25,040	259
160	57.9	22,120	253
170	55.6	19,550	247
180	53.1	17,290	240
190	50.6	15,290	232
200	48.0	13,490	223
210	45.3	11,880	214
220	42.4	10,410	203
230	39.3	9,090	191

### 280' (85.3 m) Boom length

46	81.8	84,470*	285
50	81.0	84,270*	284
60	78.9	83,540*	282
70	76.8	82,110*	280
80	74.7	68,850	278
90	72.6	57,860	275
100	70.4	49,310	271
110	68.2	42,480	268
120	66.0	37,490	263
130	63.7	32,830	259
140	61.4	28,900	254
150	59.1	25,510	248
160	56.6	22,580	242
170	54.1	20,030	235
180	51.6	17,770	227
190	48.9	15,760	219
200	46.1	13,970	209
210	43.2	12,350	199
220	40.1	10,900	188
230	36.7	9,580	175

### 300' (91.4 m) Boom length

49	81.8	74,730*	305
50	81.6	74,730*	304
60	79.7	73,910*	303
70	77.7	72,390*	301
80	75.8	67,920	298
90	73.8	56,900	296
100	71.8	48,330	293
110	69.7	41,490	289
120	67.7	36,540	285
130	65.6	31,870	281
140	63.5	27,920	276
150	61.3	24,540	271
160	59.1	21,610	265
170	56.9	19,040	259
180	54.5	16,780	252
190	52.2	14,780	245
200	49.7	12,980	236
210	47.1	11,360	227
220	44.4	9,900	218
230	41.6	8,570	207